



Notification of an Environmental Authorisation Process in terms of the National Environmental Management Act (Act No. 107 of 1998) and the National Water Act (Act No. 36 of 1998) for the Proposed Solar PV Project in Rietfontein Farm, Lephalale, Limpopo Province.

DFFE Ref. No: 2024-01-0028: DWS Ref. No: Pending

MAC Ref. No: 23-CFP-112

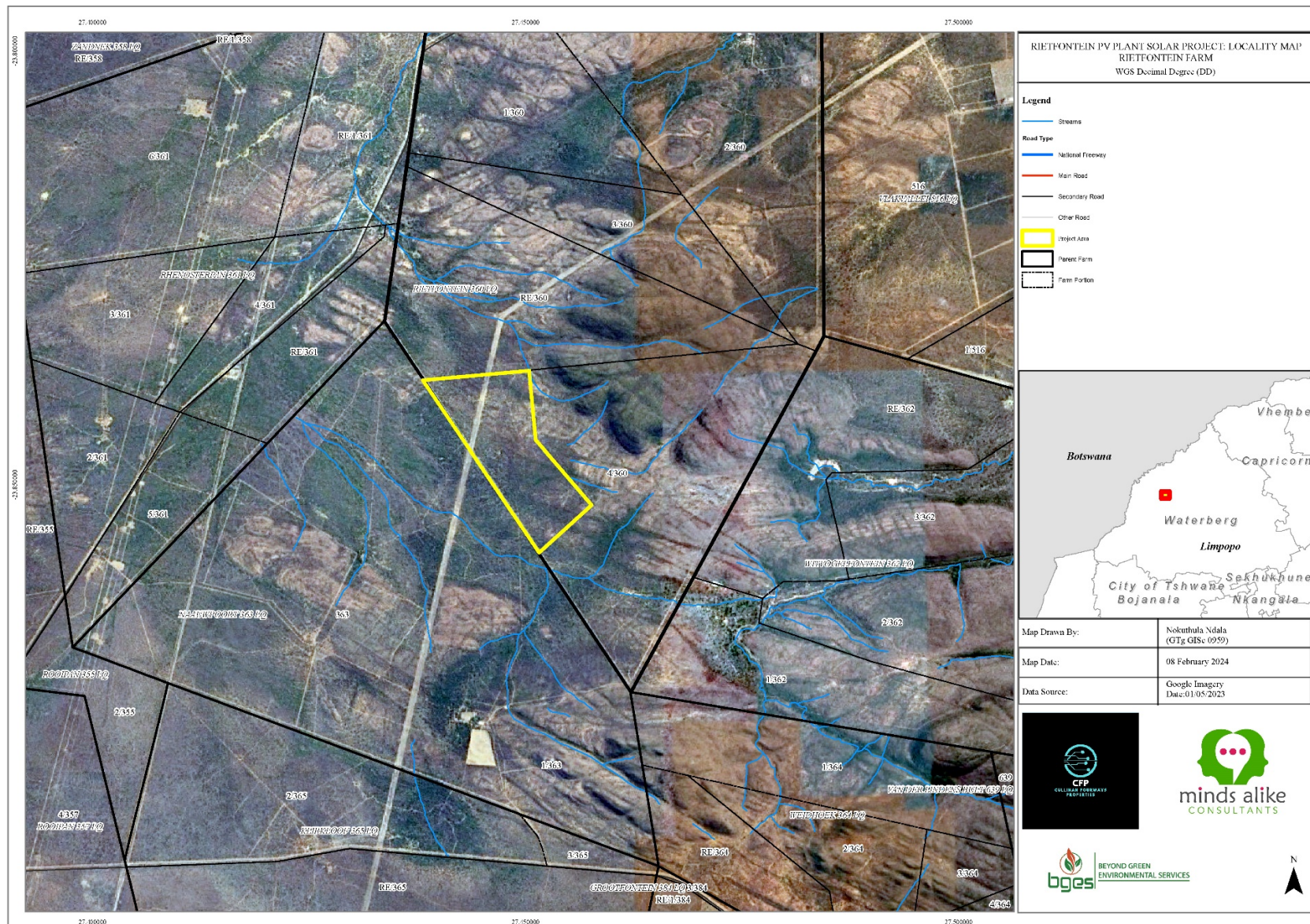


Proposed Project Description

Cullinan Fourways Properties (Pty) Ltd proposes to develop a Photovoltaic power plant and associated infrastructure on Rietfontein farm No.360 LQ, in the Lephalale Local Municipality, of the broader Waterberg District Municipality, Limpopo province. The proposed development land area is ± 196 hectares and comprises of a Solar PV farm with an output of 200MW output.

Minds Alike Consultants (MAC) has been appointed to undertake the environmental authorisation (EA) processes and associated Public Participation Processes (PPP) required for the proposed project in line with the National Environmental Management Act (NEMA) Act 107 of 1998, the EIA Regulations (2014, as amended) and the National Water Act (Act No. 36 of 1998).

Locality Map



Activities for which Environmental Authorisation is sought:

The following Listed Activities in terms of the NEMA EIA Regulations (2014, as amended), have been triggered by the project:

- GN R327, 07 April 2017, Listing Notice 1 – Activities 11 and 56
- GN R325, 07 April 2017, Listing Notice 2 – Activities 1, and 15
- Section 21 of the NWA (Water Use Authorisation)

Public Participation Process:

You are hereby invited to participate in the relevant environmental authorisation stakeholder engagement process by registering as an Interested and Affected Party (I&AP) as well as to raise any issues or concerns about the proposed environmental authorisation application or to submit suggestions regarding the project. As a registered I&AP, you will receive further information and will be kept informed of the decisions taken by the competent authorities. Should you wish to register as an I&AP or to receive continuous updates on the project and the environmental authorisation processes, contact us using the details below.

The Draft Scoping Report (DSR) is available for review and comment from 23 February 2024, comments should reach Minds Alike Consultants within 30 days (no late comments will be considered). The DSR can be accessed as follows:

- Electronically via the following link: <https://www.mindsalikeconsultants.co.za>
- Hard copy at the Lephalale Local Municipality Offices

To register as an I&AP or for information regarding the Scoping Report, Environmental Impact Report, Water Use License Report and Supporting Documentation please consult the MAC Website utilising the link below:

- <https://www.mindsalikeconsultants.co.za> or
- Scan the QR link

Please submit all comments directly to MAC utilising the reference 23-CFP-112 as follows:

Reatlegile Mashiteng, 083 280 2729, reatlegile@mindsalikeconsultants.co.za or

Nonkululeko Mbasane, 072 172 8374, nonkululeko@beyondges.co.za

